

Incremental Shaft Encoders Type PC 9/PC 9S

Economy Types

Panelcoders™



- Provides digital control inputs from operators's panel
- Bidirectional squarewave signal outputs
- Up to 512 increments
- Continuous and reversible rotation
- Non-contacting
- Operating temperature -40 ... 100 °C

NUMBER OF PULSES

100 ... 512

TECHNICAL DATA mechanical

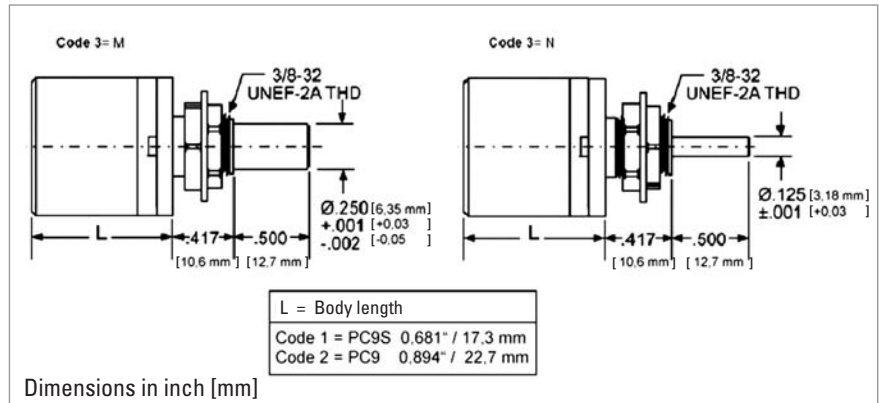
| | |
|-------------------------------|--|
| Shaft load | 1/8" Shaft: 4 N axial, 27 N radial 1/4" Shaft: 4 N axial, 4 N radial |
| Moment of inertia | 0.20 gcm ² |
| Operating temperature | -40 ... +100 °C |
| Storage temperature | -50 ... +125 °C |
| Relative humidity | 90 %, non-condensing |
| Connection | PC9: 10 pole header PC9S: 5 pole header |
| Recommended mating connectors | PC9: Thomas & Betts, part number 622-1030 (on request) PC9S: AMP, part number 103675-4 (on request) |

TECHNICAL DATA electrical

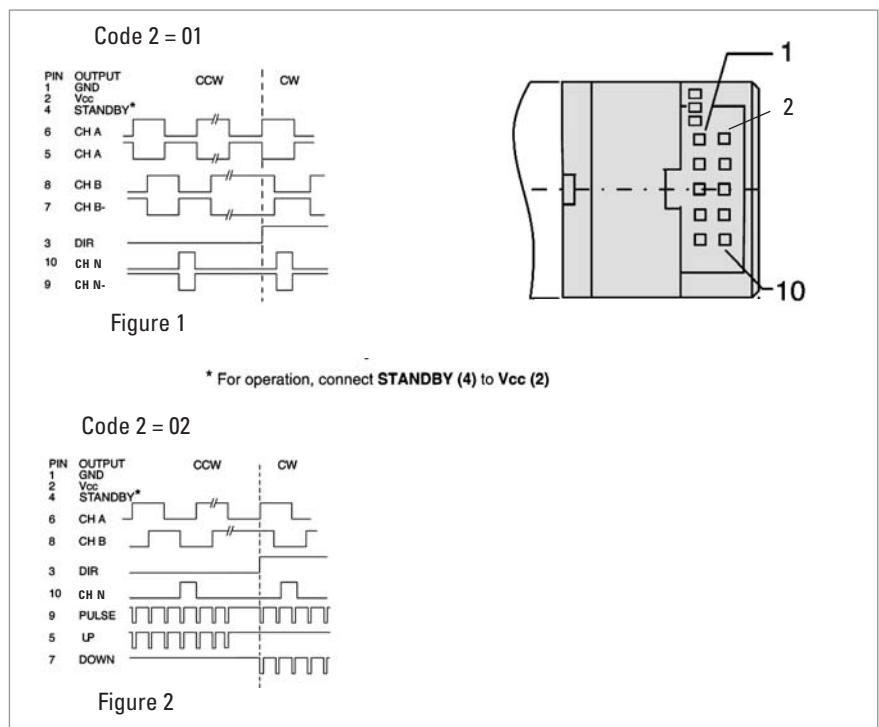
| | |
|-----------------------|---|
| Code | Incremental, optical |
| Phasing | 90° ±18° electrical |
| Symmetry | 180° ±18° electrical |
| Index pulse width | 90° ±36° electrical |
| Supply voltage | DC 5 V ±10 % |
| Supply current | 10 mA, typical |
| Standby current | max. 50 µA (PC9 only) |
| Output signals | min. 2.5 V high (V _{OH}) max. 0.5 V low (V _{OL}) |
| Output current | PC9: 3 mA sink/source (25 °C), 2 mA (100 °C) PC9S: 6 mA sink/source (25 °C), 4 mA (100 °C) |
| Max. output frequency | 200 kHz |

Incremental Shaft Encoders Type PC 9/PC 9S Economy Types Panelcoders™

DIMENSIONAL DRAWINGS



OUTPUT WAVEFORMS CONNECTIONS PC9



ACCESSORIES PC9

| | |
|---|---------------|
| | ordering code |
| 10 pole header, 30 cm ribbon cable with connector | CA 0 040 012 |

ORDERING INFORMATION PC9

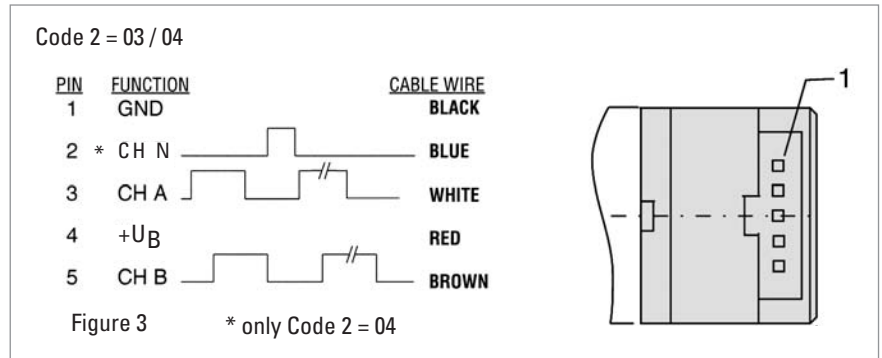
| Type | Number of pulses | Code 2: Output | Mounting |
|--------------------------|--------------------------|--------------------------|------------------------------|
| <input type="checkbox"/> | <input type="checkbox"/> | <input type="checkbox"/> | <input type="checkbox"/> |
| PC9 | 0100 | 01 see figure 1 | M 1/4" Shaft, sleeve bearing |
| | 0144 | 02 see figure 2 | N 1/8" Shaft, ball bearings |
| | 0200 | | |
| | 0256 | | |
| | 0300 | | |
| | 0360 | | |
| | 0500 | | |
| 0512 | | | |

Incremental Shaft Encoders Type PC 9/PC 9S

Economy Types

Panelcoders™

OUTPUT WAVEFORMS □ CONNECTIONS PC9S



ACCESSORIES PC9S

| | |
|---|-------------------------------|
| 5 pole header, 30 cm cable with connector | ordering code CA 0 050 012 |
|---|-------------------------------|

ORDERING INFORMATION PC9S

| Type | Number of pulses | Code 2: Output | Mounting |
|-------------|--|---|---|
| □ | □ | □ | □ |
| PC9S | 0 100 0 144 0 200 0 256 0 300 0 360 0 500 0 512 | 03 see figure 3 (no index) 04 see figure 3 | M 1/4" Shaft, sleeve bearing N 1/8" Shaft, ball bearings |