



Eagle Signal Controls

*J.DARBYSHIRE & SON LTD*

# CYCL-TIME™ Percent Timer

The Next Generation Updated & Improved Percent Timer

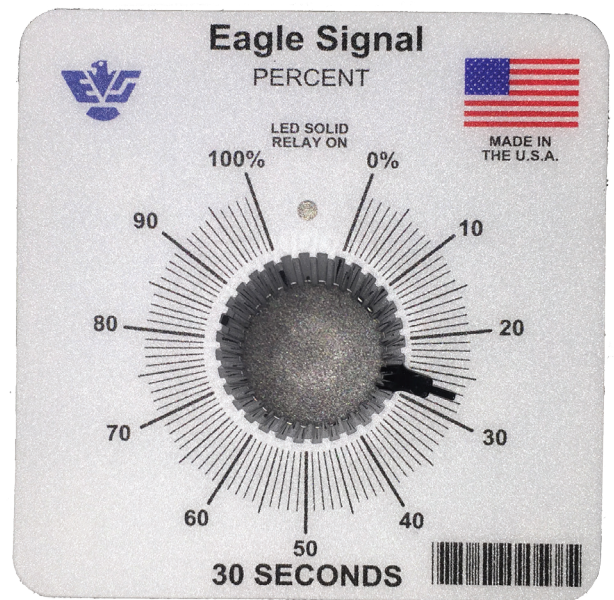
The NEW CYCL-TIME™ Percent Timer Series is an accurate, economical, enclosed percentage timer designed for use in applications where a repetitive “on” time of a fixed cycle needs to be variable.

This timer series is ideally suited for irrigation controls, chemical feeding, programmed temperature, electric heaters, ovens, motor controls, and lubrication systems.

The panel mounted units have an easy to set dial. Four bolts at the corners of the front dial plate make it easy to securely mount the timers in panels up to ¼ inch thick. The timers have dimensions that fit the same cutout as the Eagle Signal HQ4E making these a suitable replacement unit. The load relays are enclosed for environmental protection. Electrical connections are made to the terminal block strip on the rear of the unit.

Functional Improvements over all alternative Percent Timers:

- Better connections for safer, faster installation
- Enclosed electronics
- Upgraded potentiometer



*The NEW CYCL-TIME™ Percent Timer is an upgrade and replacement for ATC and Macromatic timers as well as our current Eagle Signal Percent Timers.*

- Enclosure is fastened behind the panel with no penetration through the front plate
- Finger-safe terminal block with cover
- UL Recognized and CE compliant
- Robust potentiometer ensures the pointer remains at set point
- Hard mechanical stops at 0% and 100%
- Resists water, dust or other ingress



TIME



Eagle Signal Controls



+44 1253893878



[www.jdhengstler.co.uk](http://www.jdhengstler.co.uk)



[sales@jdhengstler.co.uk](mailto:sales@jdhengstler.co.uk)



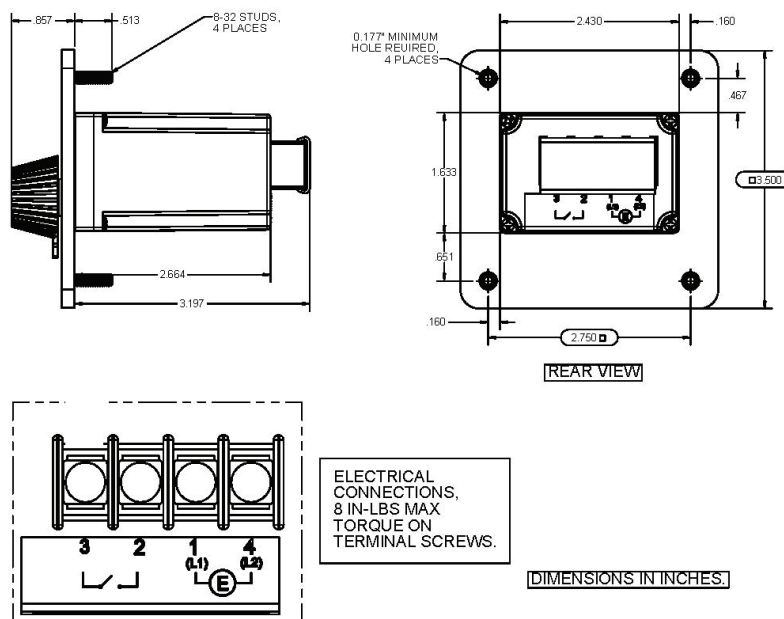
7 Tudor Close, Poulton-le-Fylde, Lancs, FY67TD, UK

# CYCL-TIME™ Percent Timer

## SPECIFICATIONS

INPUT VOLTAGE/FREQUENCY	120VAC <sup>-</sup> (+10%, -15%) 50/60 Hz. 240VAC <sup>-</sup> (+10%, -15%) 50/60 Hz.
POWER CONSUMPTION	1.2 Watts
RELEASE VALUE OF INPUT VOLTAGE	10%
CONTACT RATINGS	10A, 120VAC <sup>-</sup> , Resistive, Inductive. 1/6HP @120VAC <sup>-</sup> 5A, 240VAC <sup>-</sup> , Resistive, Inductive. 1/2HP @ 240VAC <sup>-</sup>
ELECTRICAL ENDURANCE	30,000 Cycles
FREQUENCY OF OPERATION	Operating frequency depends on time range
MECHANICAL ENDURANCE	30,000 Cycles
CONTACT MATERIAL	Silver Tin Oxide
OPERATING TEMPERATURE	-10 to +140 Deg. F (-23 to +60 Deg. C)
RELATIVE HUMIDITY	25% to 85%
MOUNTING POSITION	Flush, Panel Mount
DEGREE OF PROTECTION	IP51 for panel surface only. To be enclosed in suitable enclosure.
TYPE OF INSULATION	Functional, Pollution Degree 2
OVERVOLTAGE CATEGORY	Cat. 3, Pollution Degree 2
IMPULSE TEST	120VAC <sup>-</sup> / 1,500 VAC <sup>-</sup> 240VAC <sup>-</sup> / 2,500 VAC <sup>-</sup>
DIELECTRIC TEST	1,440 VAC <sup>-</sup> , 1 Minute
EMC IMMUNITY	8KV Static Air Discharge
PROSPECTIVE CURRENT	100A
UNIT FUNCTION	Repeat Cycle Relay
RECOVERY TIME	Complete Operating Cycle
MINIMUM CONTROL IMPULSE	<10ms
SETTING ACCURACY	1% of Total Time Cycle
REPEATABILITY	±1% of Total Time Cycle
INFLUENCE EFFECTS	Voltage Error - Max. ±0.5% Temperature Error - Max. ±2%

## DIMENSIONS



## ORDERING INFORMATION

CT4 - XX XXX XX

SYM	DIAL RANGE
01	15 SEC.
02	30 SEC.
03	60 SEC.
04	120 SEC.
05	4 MIN.
06	5 MIN.
07	10 MIN.
08	15 MIN.
09	30 MIN.
10	60 MIN.
11	120 MIN.

SYM	PROGRAM
S48	Memory*
S25	Reset**

SYM	DIAL RANGE
A6	120VAC <sup>-</sup>
B6	240VAC <sup>-</sup>

\* Memory Program continues cycle from point when power was lost  
\*\* Reset Program starts new cycle after power interruption