

Incremental Encoder Type RI 57



- Economy-priced industrial encoder
- Up to 4096 steps with 1024 pulses / rev
- High signal accuracy
- Protection class IP 64
- Application, e.g. :
packaging machinery, textile machinery

Technical Data

Mechanical

Mounting	Clamping flange
Shaft diameter	10 mm
Shaft load	Radial 60 N, axial 40 N
Speed	Max. 10,000 min ⁻¹
Torque	≤ 0,5 Ncm
Moment of inertia	Approx. 20 gcm ²
Protection class (EN 60529)	Housing and shaft input IP 64
Operating temperature	0...+60 °C
Vibration proof (IEC 68-2-6)	100 m/s ² (10...2000 Hz)
Shock resistance (IEC 68-2-27)	1,000 m/s ² (6 ms)
Type of connection	Cable or connector axial/radial
Material	Flange: aluminium, cover: plastic
Weight	Approx. 300 g

Electrical

General design	According to DIN VDE 0160 protection class III, contamination level 2, overvoltage class II
Supply voltage	10...30 VDC (SELV), protected against polarity reversal
Output	Push-Pull
Output signals	A, B, N
Output load	± 30 mA
Pulse shape	Rectangular
Current consumption	60 mA (10 V DC), 30 mA (24 V DC)
Pulse frequency	max. 200 KHz

Connection diagram

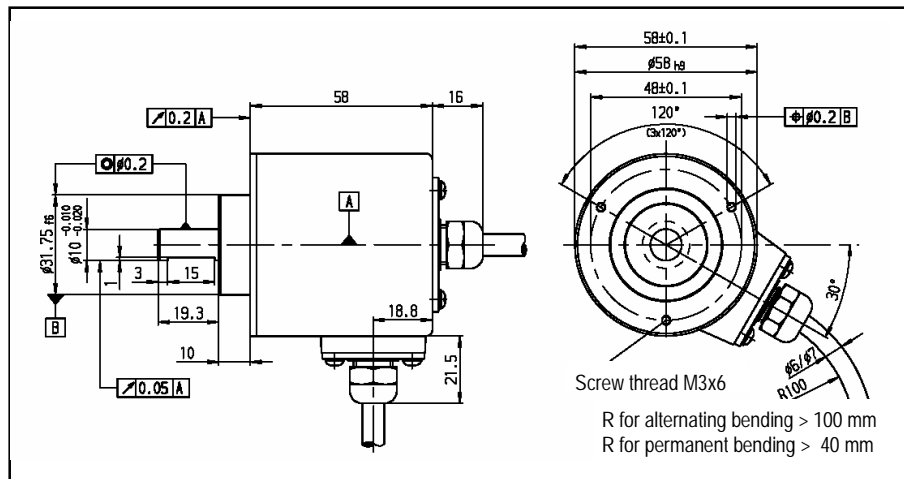
Cable Connections (PVC)		Connector Pins	
Colour	Signal	MIL 7-pole	MIL 10-pole (Optional)
White	Channel A	1/A	Channel A
Green	Channel B	2/B	Channel B
Yellow	Channel N	3/C	Channel N
Yellow/Black	Alarm	4/D	10...30 V DC
Red	10...30 VDC	5/E	Alarm
Black	GND	6/F	GND
		7/G	N.C.
		8/H	N.C.
		9/I	N.C.
		10/J	N.C.

N.C. = Not Connected

Dimensioned Drawings

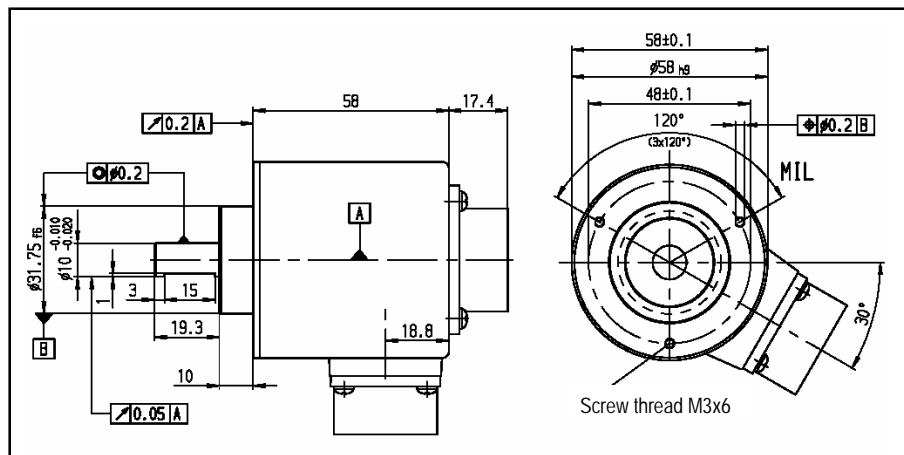
Cable

Axial and radial

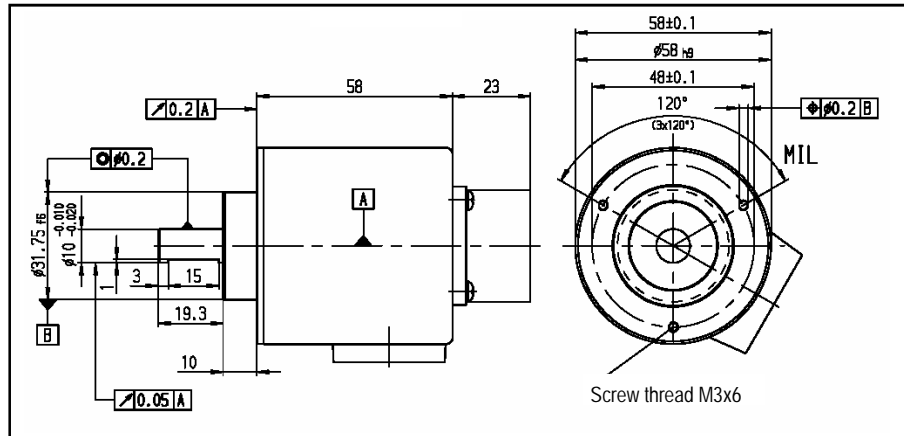


MIL 7-pole

Axial and radial



(Optional)
MIL 10-pole
axial



Ordering Data

